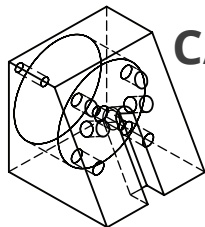


CADLink

Real time BOM comparison, 2-way data push
Payback period of 6 months



CAD



No	Save	ITEM	Description	Revision	UOM	Oper (um)	Qty	Prod Cost	Source	Stocked	Mult Type	ABC Code	Cost Method	Cost Type	MTI
1		QB-BEZ_001	Bezel Moldbase	A	EA		1.0000	FG-CUSTOM	M		M	A	S	A	
1.1		QB-BEZ_002	Bezel Moldbase - Fixed Half	A	EA		1.0000	FG-CUSTOM	M		M	A	S	A	
1.1.1		QB-BEZ_003	Cavity Plate A				1.0000								
1.1.2		RB-HASCO-01	HASCO Metric Clamping Plate		EA		1.0000	FG-200	P		M	C	S	A	
1.1.3		RB-HASCO-03	HASCO Metric Angle Pin		EA		4.0000	FG-CUSTOM	P		T	B	S	A	
1.1.4		QB-BEZ_004	Guide Pin		EA		1.0000	FG-100	P		O	B	S	A	
1.1.5		QB-BEZ_005	Locating Ring		EA		1.0000								
1.1.6		QB-BEZ_006	Spinal Bushing		EA		1.0000								
1.1.7		QB-BEZ_007-01A	Connecting Nipple		EA		4.0000								
1.2		QB-BEZ_008	Bezel Moldbase - Moving Half	A	EA	10	1.0000	FG-CUSTOM	M		M	A	S	A	
1.2.1		QB-BEZ_009	Side Core Clamp Plate		EA		4.0000								
1.2.2		QB-BEZ_010	Cavity Plate B	A	EA	10	1.0000	FG-CUSTOM	P		M	B	S	A	
1.2.3		RB-HASCO-02	HASCO Metric Intermediate Plate		EA	10	1.0000	FG-200	P		M	C	S	A	
1.2.4		QB-BEZ_011-B	Spacer Block		EA		2.0000								
1.2.5		RB-HASCO-01	HASCO Metric Clamping Plate		EA	10	1.0000	FG-200	P		M	C	S	A	
1.2.6		QB-BEZ_012	Guide Bushing		EA		4.0000								
1.2.7		QB-BEZ_013	Centering Sleeve		EA		4.0000								
1.2.8		QB-BEZ_007-01A	Connecting Nipple		EA		4.0000								
1.2.9		QB-BEZ_011	Spacer Block		EA	10	2.0000	FG-CUSTOM	P		M	B	S	A	
1.3		QB-BEZ_015	Bezel Moldbase Ejector Set	A	EA		1.0000	FG-CUSTOM	M		M	A	S	A	
1.3.1		QB-BEZ_019	Ejector Pin		EA		5.0000								
1.3.2		QB-BEZ_018	UNIFER T-Obis		EA		2.0000	FG-CUSTOM	P		M	B	S	A	
1.3.3		QB-BEZ_021	Sealing Washer		EA		4.0000	FG-CUSTOM	P		T	B	S	A	
1.3.4		Z40-41-290	Ejector Pin - Assy	A	EA		1.0000								
1.3.5		QB-BEZ_016	Ejector Base Plate	B	EA		1.0000	FG-CUSTOM	P		M	B	S	A	
1.3.6		QB-BEZ_017	Ejector Retainer Plate	B	EA		1.0000	FG-CUSTOM	P		M	B	S	A	
1.4		QB-BEZ_022	Bezel Moldbase Side Core Slide	A	EA		2.0000	FG-CUSTOM	M		M	A	S	A	
1.4.1		QB-BEZ_023	Slide		EA		1.0000								
1.5		QB-BEZ_024	Bezel Moldbase Lifter	A	EA		2.0000	FG-CUSTOM	M		M	A	S	A	
1.5.1		QB-BEZ_025	UNIFER Li-Coupling		EA		1.0000								

Features

- Real-time, direct, two-way link with Infor
- Automated, single-step BOM push
- View BOM change summary
- Push Revision to Infor and CAD
- Export Excel and PDF files
- Notification for errors and missing fields

Benefits

- Eliminate manual data entry
- Cut design cost
- Improve data consistency
- Improve information flow
- Increase data accuracy
- Reduce cycle time



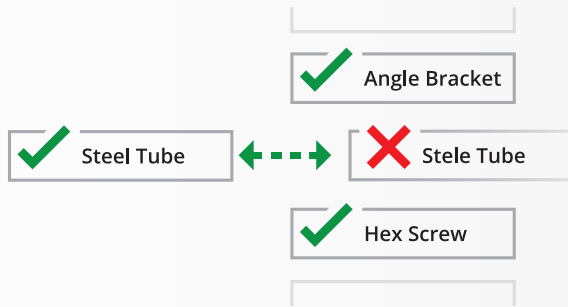
Solution
Partner

www.QBuildSoftware.com

✉ info@QBuildSoftware.com

☎ +1 905 479 7811

☎ +1 905 479 2636



Resolve Discrepancies

Discrepancies between CAD and Infor are highlighted, allowing you to select or enter the correct data.

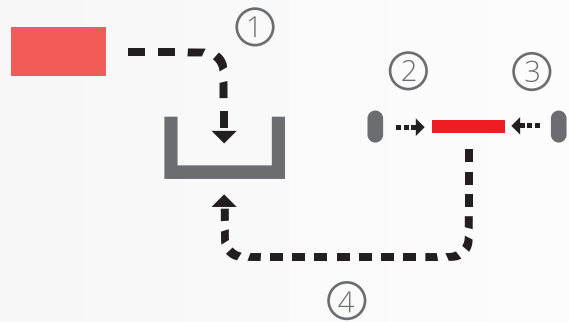


Access Infor Data

CADLink's direct integration allows you to access Infor data such as Product Code, Part Class, and Raw Material Part Data from the CADLink interface.

Operations

Assigning Infor Operations is easy! Simply select a work center from a drop-down list.



Partners & Integrations

