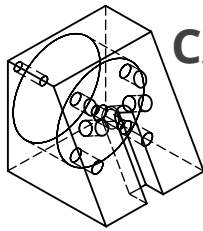
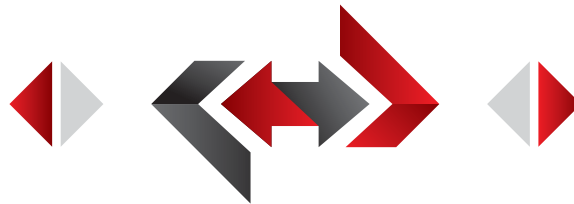


CADLink

Real time BOM comparison, 2-way data push
Payback period of 6 months



CAD



Dynamics 365

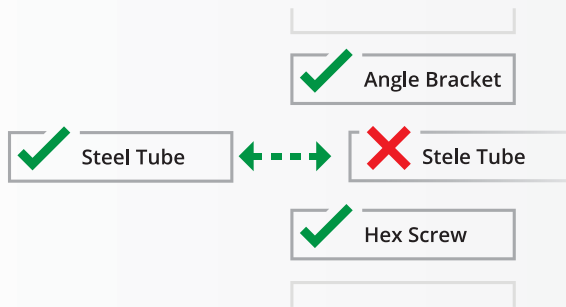
CADLink 27.0.0.5030							
CADLink Settings							
	Save	Part Number	Revision	Description	Unit Qty	Base Uom	Item Category
Bills of Materials	<input checked="" type="checkbox"/>	QB-BEZ_001	A	Bezel Moldbase Assy	1.0000	Each	Miscellaneous
Bom Changes	<input checked="" type="checkbox"/>	QB-BEZ_002	A	Bezel Moldbase - Fixed	1.0000	Each	Miscellaneous
CAD Properties	<input checked="" type="checkbox"/>	QB-BEZ_007B		Connecting Nipple	4.0000	Each	Miscellaneous
CADLink Messages	<input checked="" type="checkbox"/>	QB-BEZ_003		Cavity Plate A	1.0000	Each	Miscellaneous
	<input checked="" type="checkbox"/>	QB-HASCO-01		HASCO Metric Clamping Plate	1.0000	Each	Miscellaneous
	<input checked="" type="checkbox"/>	QB-HASCO-03		HASCO Metric Angle Pin	4.0000	Each	Miscellaneous
	<input checked="" type="checkbox"/>	QB-BEZ_004		Guide Pillar	4.0000	Each	Miscellaneous
	<input checked="" type="checkbox"/>	QB-BEZ_005		Locating Ring	1.0000	Each	Miscellaneous
	<input checked="" type="checkbox"/>	QB-BEZ_006		Sprue Bushing	1.0000	Each	Miscellaneous
	<input checked="" type="checkbox"/>	QB-BEZ_008	B	Bezel Moldbase - Moving	1.0000	Each	Miscellaneous
	<input checked="" type="checkbox"/>	QB-BEZ_009		Side Core Clamp Plate	4.0000	Each	Miscellaneous
	<input checked="" type="checkbox"/>	QB-BEZ_010	A	Cavity Plate B	1.0000	Each	Miscellaneous
	<input checked="" type="checkbox"/>	QB-HASCO-02		HASCO Metric Intermediate Plat	1.0000	Each	Miscellaneous
	<input checked="" type="checkbox"/>	QB-BEZ_011		Spacer Block	2.0000	Each	Miscellaneous
	<input checked="" type="checkbox"/>	QB-HASCO-01		HASCO Metric Clamping Plate	1.0000	Each	Miscellaneous
	<input checked="" type="checkbox"/>	QB-BEZ_012		Guide Bushing	4.0000	Each	Miscellaneous
	<input checked="" type="checkbox"/>	QB-BEZ_013		Centering Sleeve	4.0000	Each	Miscellaneous
	<input checked="" type="checkbox"/>	QB-BEZ_007B		Connecting Nipple	4.0000	Each	Miscellaneous
	<input checked="" type="checkbox"/>	QB-BEZ_015-1	A	Bezel Moldbase Ejector	1.0000	Each	Miscellaneous
	<input checked="" type="checkbox"/>	QB-BEZ_019-1		Ejector Pin	5.0000	Each	Miscellaneous
	<input checked="" type="checkbox"/>	QB-BEZ_016-1		Ejector Retainer Plate	1.0000	Each	Miscellaneous
	<input checked="" type="checkbox"/>	QB-BEZ_017-1		Unilitter T-Gibs	2.0000	Each	Miscellaneous
	<input checked="" type="checkbox"/>	QB-BEZ_018		Seating Washer	4.0000	Each	Miscellaneous
	<input checked="" type="checkbox"/>	Z40-4X250	A	HASCO Metric Ejector Pin	1.0000	Each	Miscellaneous
	<input checked="" type="checkbox"/>	QB-BEZ_022	A	Bezel Moldbase Side Core Slide	2.0000	Each	Miscellaneous
	<input checked="" type="checkbox"/>	QB-BEZ_023		Slide	1.0000	Each	Miscellaneous
	<input checked="" type="checkbox"/>	QB-BEZ_024-1	A	Bezel Moldbase Lifter	2.0000	Each	Miscellaneous
	<input checked="" type="checkbox"/>	QB-BEZ_025-1		Unilitter U-Coupling	1.0000	Each	Miscellaneous
	<input checked="" type="checkbox"/>	11147.0003		BUTTON HEAD SCREW 3/8"	1.0000	Each	Miscellaneous

Features

- Real-time, direct, two-way link with D365
- Automated, single-step BOM push
- View BOM change summary
- Push Revision to D365 and CAD
- Export Excel and PDF files
- Notification for errors and missing fields

Benefits

- Eliminate manual data entry
- Cut design cost
- Improve data consistency
- Improve information flow
- Increase data accuracy
- Reduce cycle time



Resolve Discrepancies

Discrepancies between CAD and Dynamics 365 are highlighted, allowing you to select or enter the correct data.

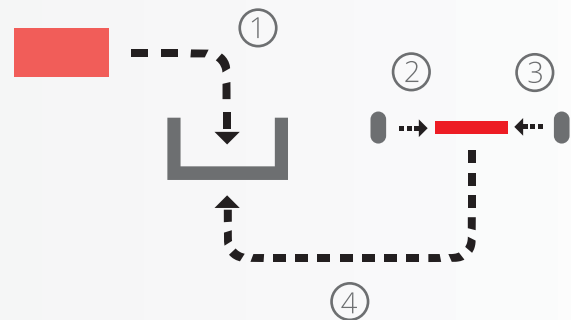


Access Dynamics 365 Data

CADLink's direct integration allows you to access D365 data such as Product Code, Part Class, and Raw Material Part Data from the CADLink interface.

Operations

Assigning routings/operations is easy!
Simply select a work center from a drop-down list.



Partners & Integrations

