



Certified Gold Product

Autodesk Inventor 2011 Certified

AutoCAD 2011 Compatible

Autodesk Vault 2011 Compatible

Autodesk

SOLID EDGE VELOCITY SERIES



ISV/Software Solutions

# QBuild Software Solution Products

## CADLink

CAD Interface system that connects your design information to SyteLine.

## ECN Manager

Ties your SyteLine CAD information with your Engineering change process.

## PartSurfer

Simple, read-only part search application.

## Time Sheet

Tracks engineering time to properly calculate actual cost.

## QBuild Software

145 Renfrew Drive  
Unit 140  
Markham, Ontario  
L3R 9R6

Phone: 1 905-479-7811 ext 24  
Fax: 1 905-479-2636  
E-mail: info@qbuildsoftware.com

# QBuild CORPORATION

WWW.QBUILDSOFTWARE.COM

QBuild Software

# Integrate CAD Data with SyteLine

## Infor SyteLine

## CAD System

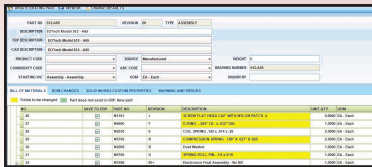


QBuild Corporation focuses on integrating Engineering software with Infor SyteLine.

# CADLink

CADLink Interface system is a turnkey system designed to tightly connect your design information to SyteLine. It allows engineering designers to view, modify, update and create SyteLine engineering information such as bill of materials and item master data without ever leaving the design suite of their choice:

- AutoCAD
- CATIA
- Inventor
- Pro-E
- SolidEdge
- SolidWorks



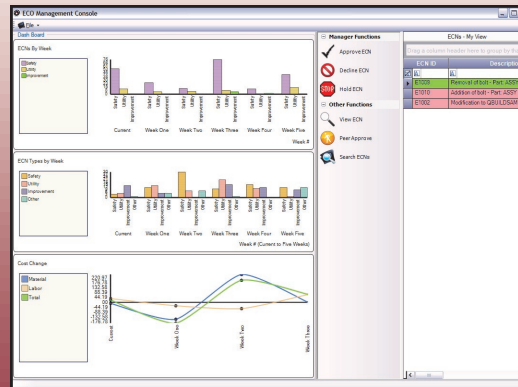
## Features;

- ∅ Easily integrates with your PLM product such as Vault Manufacturing, ePDM and Windchill.
- ∅ Real time two way link between CAD and SyteLine Data.
- ∅ Eliminate double and triple data entry.
- ∅ Allow your engineering staff to enter SyteLine data directly from their engineering design application.

# ECN Manager

The **ECN Manager** module bolts onto CADLink providing engineers with critical change information such as inventory, open work orders and sales orders as engineering changes are made. This allows your engineering team to make informed decision regarding stock disposition and inventory rework requirements.

The **ECN Manager** distribution system ensure the right people are notified and customer orders are properly handled. The multiple approval system has the flexibility to allow both Engineering and non-Engineering personnel to approve ECN's before they are released it the shop floor.



**Keep your current work flow!!**

# PartSurfer

**PartSurfer** allows users to search results and drill down for additional information on a part related to its item number or description. It also delivers immediate results which allows employees to focus on being more productive and efficient rather than searching after information all over SyteLines' database.

- Part Number
- Transaction History
- Components
- Open Orders
- Where Used
- Routing
- Inventory .....



# TimeSheet

The **Engineering Timesheet** is a key tool in any engineering manager's toolchest.



It simplifies, stores and rationalizes engineering work data, enabling project leaders, accounting and the engineering manager to understand the engineering costing and key metrics of their department.

## Features;

- Fully integrates with SyteLine Jobs and Projects