

Case Study: Integrating and Synchronizing CAD Data with SyteLine

HOW TO GAIN COMPETITIVE ADVANTAGE AND IMPROVE ENGINEERING PRODUCTIVITY

Manufacturers that use CAD software to define their products and components are faced with a quandary: they have to use both CAD and SyteLine to define their product structure. This requires double and sometimes triple data entry for every new product and every product modification or Engineering Change.

With data residing in two repositories, the BOM update process is full of potential data entry errors and broken links.

Let's take a look at how one company solved this problem:

Breaker Technology Inc. (BTI) is a leading manufacturer of quarry, mine, construction and demolition equipment worldwide. BTI is known for its strength in engineering and its willingness to customize equipment to meet its customers requirements.

Situation

Since much of BTI's equipment was engineered to each customer order, the company placed the responsibility for BOM and item management on the designers. This was great for ensuring that the product specification was followed for each customer but it also meant that each designer had to manage their BOMs in two places: CAD (either SolidWorks or AutoCAD) and SyteLine. As the company got busier and busier, this duplication of effort started to result in problems: **rework, scrapped parts, increased engineering time.**

Finding the Right Solution

They had to find a way to automatically push the CAD information to SyteLine without having to re-enter the data. They decided to go with QBuild's DesignLink.

DesignLink – offers bi-directional integration between CAD and SyteLine. Data is taken directly from the drawing or model and integrated it with SyteLine. SyteLine data is also passed back to the model.

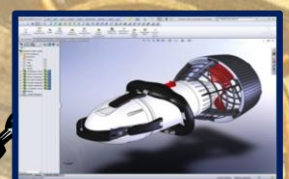
Features:

- Direct, 2-way link between SyteLine and CAD
- Push SyteLine description on drawing
- Synchronize Revision between CAD and SyteLine
- Item, BOM and Routing updates from within your CAD System
- Tie critical dimensions to SyteLine BOM

Infor SyteLine

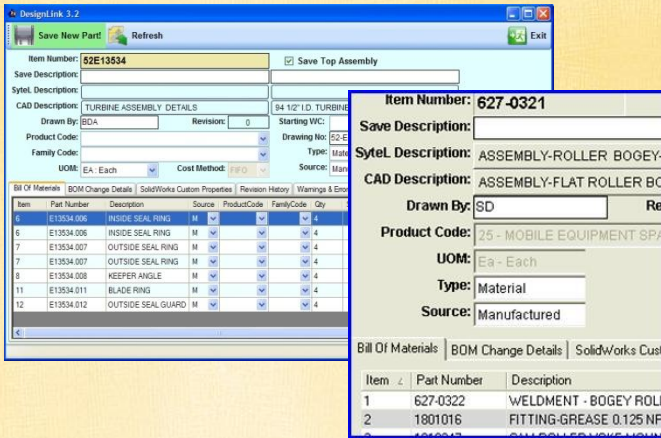


CAD Software



Real time, two-way link between SyteLine and CAD

“find a way to automatically push the CAD information to SyteLine without having to re-enter the data.”



DesignLink Print Screen.

Benefits

After implementing DesignLink, BTI was able to see a rise in engineering productivity resulting in a 3 month payback for the entire investment. This implementation did not only free up valuable staff time but also allowed staff to focus on handling active customers' demands and more importantly value added activities.

Other areas of improvement:

- Eliminates Engineering ERP Clerical Work
- Speed design throughput
- Reduces Engineering cycle time
- Improves information flow
- Reduce Data Entry Errors
- Consistent drawing data
- Reduce BOM errors by tying dimensions directly to BOM

Conclusion

QBuild took the time to understand the way BTI did business and to understand their processes. As a result, QBuild was able to deliver a solution that duplicated all the manual data entry, summarizing multiple BOM, item and routing screens onto a single DesignLink grid. This the designer can use to review and approve BOM, item and routing changes to SyteLine. Many hundreds of key strokes were replaced with a single mouse click.

QBuild utilizes an iterative approach to developing a solution to your CAD data issues. We work with you from presales through the implementation phase to incorporate your feedback into the final product, ensure a payback period of six months or less.

Products

DesignLink

- CAD Interface system that connects your design information to your ERP system.

Engineering Change Order Manager → ECN Manager

- Ties your ERP CAD information with your Engineering change process.

PartSurfer

- Simple, read-only part search application.

TimeSheet

- Track engineering time to properly calculate actual cost.

QBuild Solution Products

"BTI was able to see a rise in engineering productivity resulting in a 3 month payback for the entire investment."