



145 Renfrew Drive – Unit 140
Markham, Ontario
L3R 9R6
Tel (905) 479 7811
Fax (905) 305 0839
www.qbuildsoftware.com

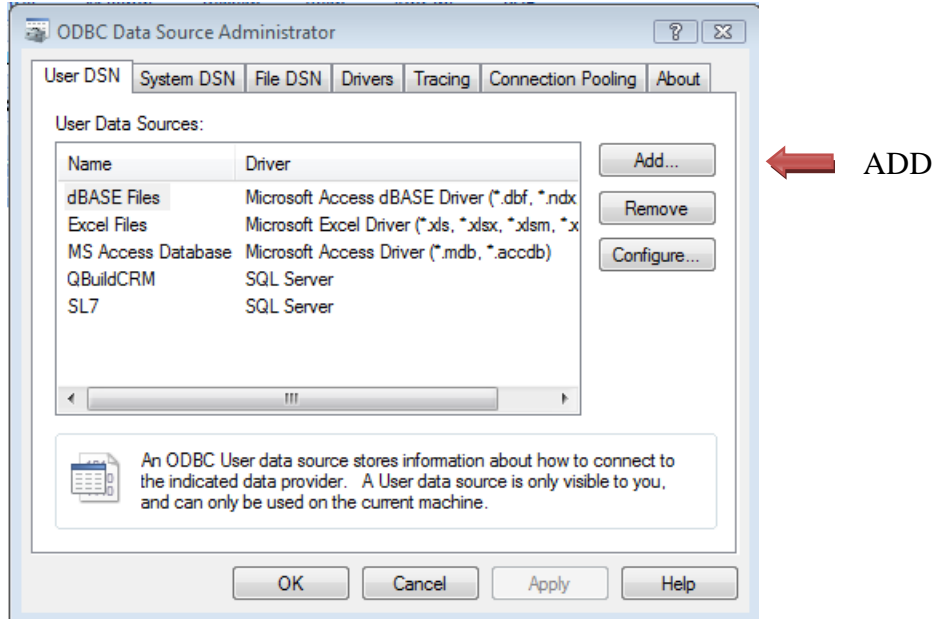
PartSurfer



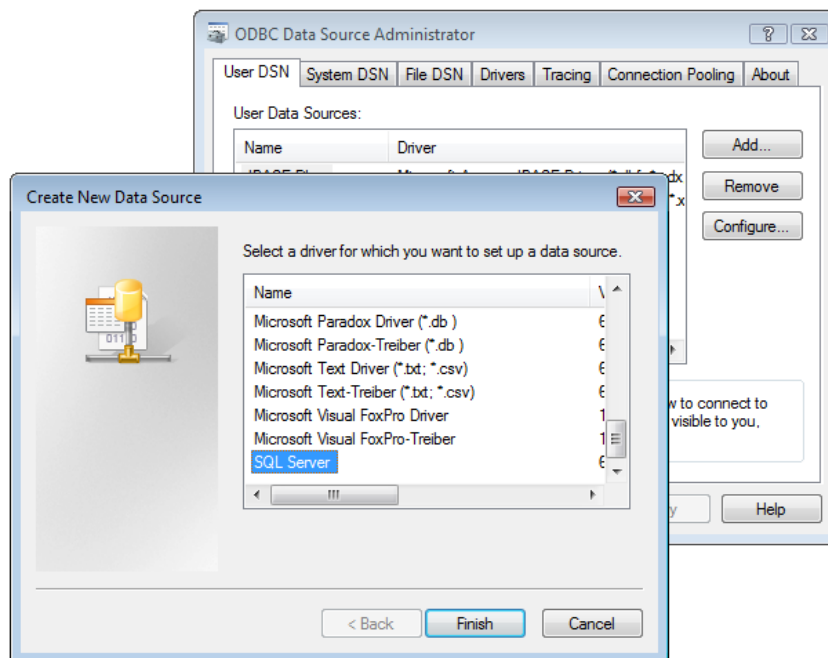
Installation

1. Control Panel >> Administrative Tools >> Data Sources (ODBC)
2. DSN setup

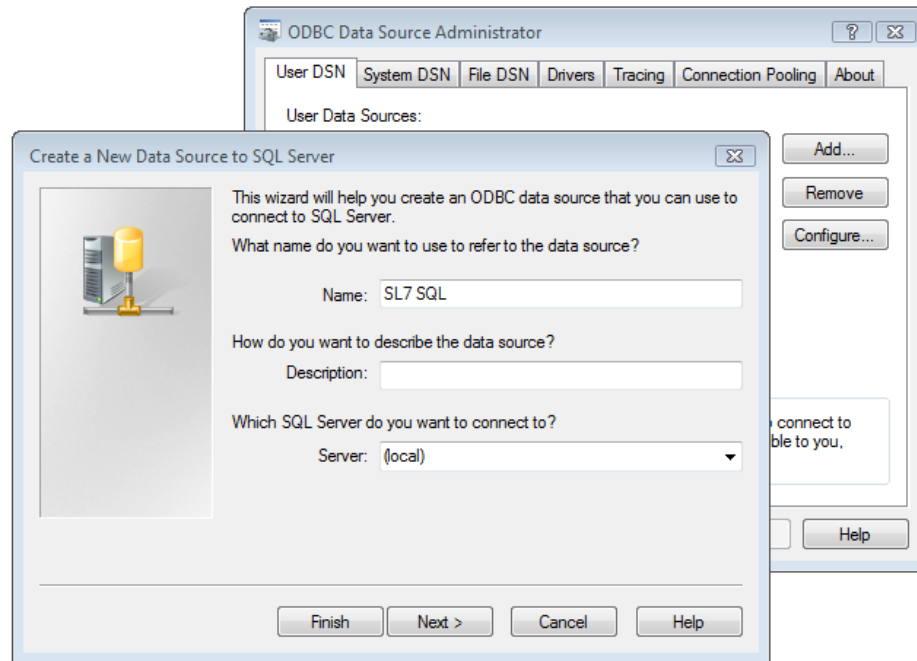
Create a DSN in the ODBC data source administrator.



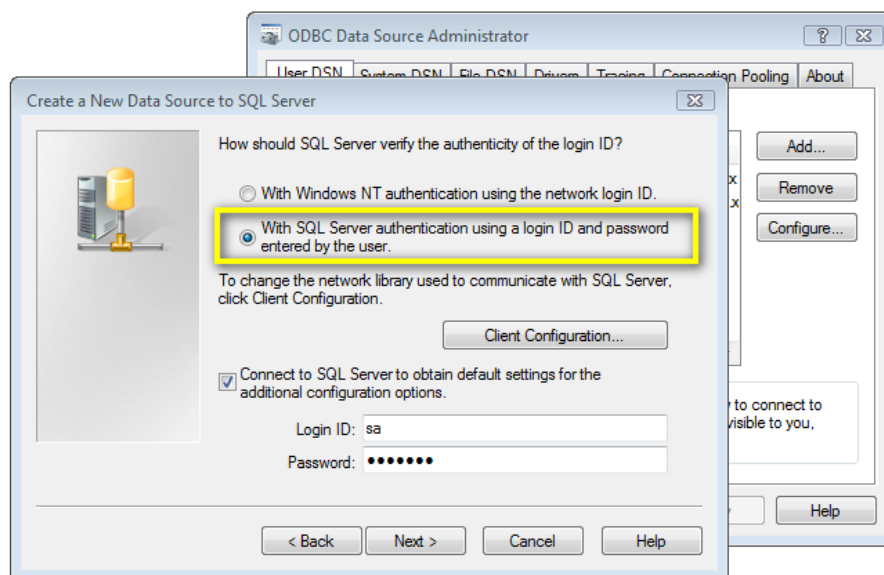
3. Choosing the right Driver → SQL Server



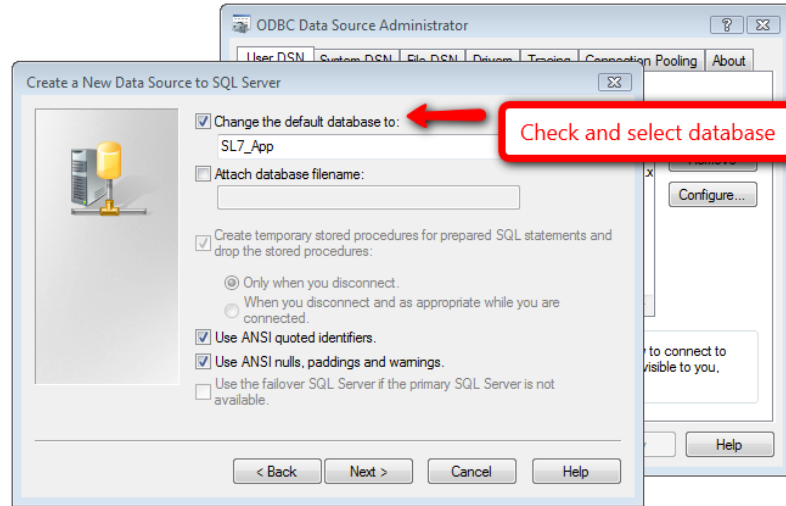
4. You can then name your DSN. Our example below shows a DSN named SL7 SQL. **Description** is not mandatory. **Server**, you should choose the server you want it to run from.



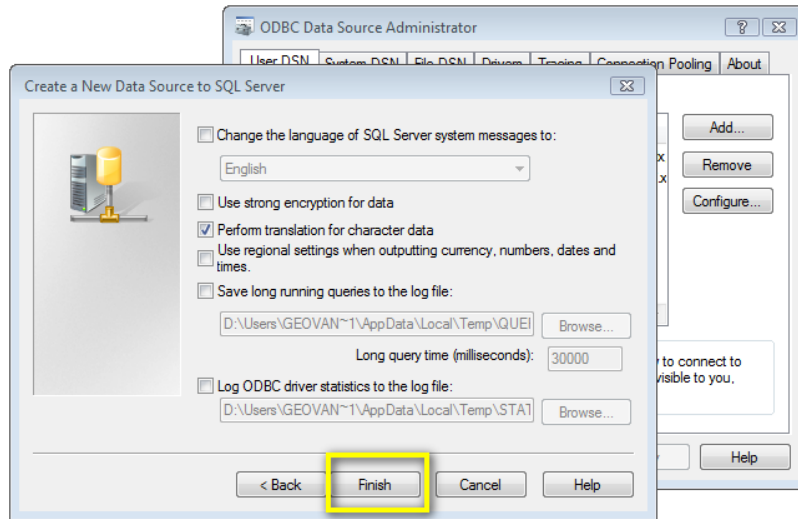
5. The Login ID and Password must be of a person who has access to update the database.



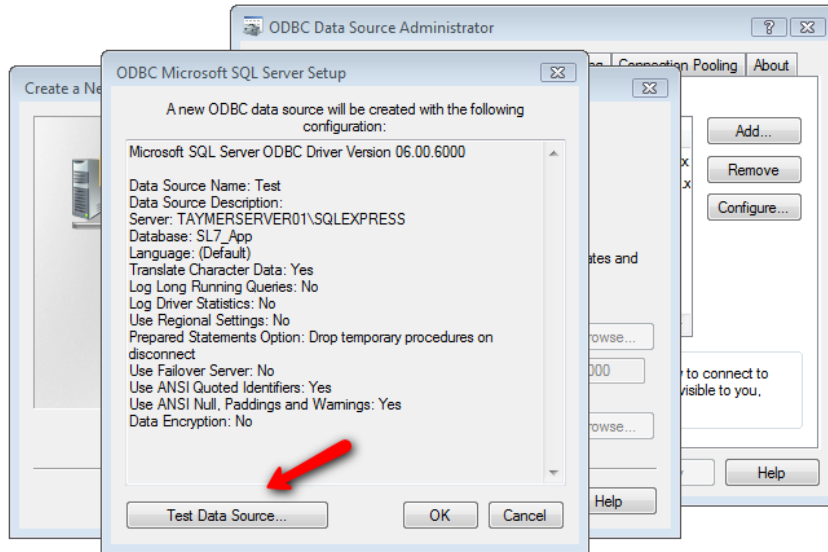
6. Selecting you database.



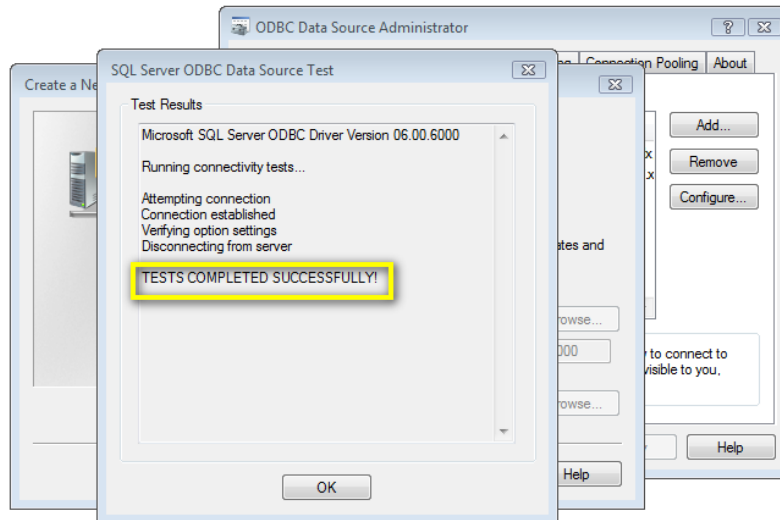
7. Finish



8. Testing Data Source



9. Successfully completed



Getting PartSurfer Started:

Double click the icon  on desktop to start PartSurfer.

If it is the first run you have to select Data Source Name and input proper user ID and password for the SQL server database for your ERP system.



The program starts and shows how many days are left for evaluation.

