

Case Study: Integrating CAD systems with SyteLine

HOW TO GAIN COMPETITIVE ADVANTAGE AND IMPROVE PRODUCTIVITY.

ERP systems are supposed to eliminate data entry duplication, reduce wasted effort, eliminate non-value added activities and most importantly share information throughout the organization. But is it exactly doing what they propose?

Breaker Technology Inc. (BTI) is one of the leading companies in North America in manufacturing and distributing wide range of quarry, mine, construction and demolition equipment worldwide. BTI is known for its reputation for engineering products with the most advanced technologies available.

Situation

BTI realized that one of the most important elements in the competitive advantage was information. As a result they implemented SyteLine and they shortly realized that the some of the processes could be eliminated by automating some of their data entry. Their engineering department was mainly affected with this implementation since the engineers were now required to input drawing data into two systems (SolidWorks & SyteLine). They were required to re-enter BoM and other relevant information into SyteLine for purpose of performing material requirement planning (MRP) calculation and to be able to order materials from suppliers.

BTI had to figure out a way to automatically pass on the information to the MRP and other modules in SyteLine without having to re-enter the data.

Finding the Right Solution

CADLink – a software that offers integration between CAD data and Syteline. Takes data directly from the drawing or model and integrates it with SiteLine.

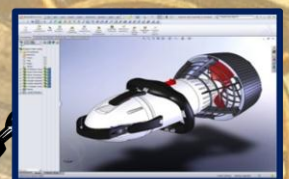
Features:

- Direct link to SyteLine data
- Push SyteLine description on drawing
- Push Revision information to CAD and SyteLine
- Item, BOM and Routing updates from within your CAD System
- Other Database Interfacing
- Tie critical dimensions to SyteLine BoM

Infor SyteLine

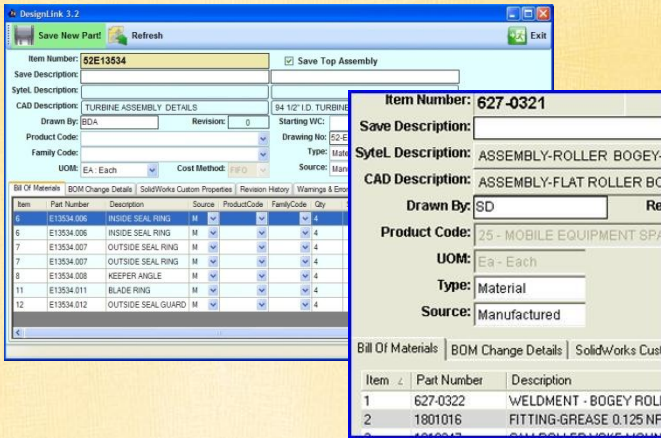


CAD Software



Real time, two-way link between SyteLine and CAD

“figure out a way to automatically pass on the information to the MRP and other modules in SyteLine without having to re-enter the data.”



CADLink Print Screen.

Benefits

After implementing CADLink, BTI was able to see a rise in their productivity which also coincide with a noticeable decreased in design and production costs. This implementation did not only free up valuable staff time but also allowed staff to focus on handling active customers' demands and more importantly value added activities.

Other areas of improvement:

- Cuts design cost
- Reduces cycle time
- Reduces matching time
- Improves information flow
- Engineering ERP Clerical Work
- Reduce Data Entry Errors
- Consistent drawing data
- Speed design throughput
- Reduce BOM errors by tying dimensions directly to BOM

Products

CADLink

- CAD Interface system that connects your design information to your ERP system.

Engineering Change Order Manager → ECN Manager

- Ties ERP CAD information with your Engineering change process.

PartSurfer

- Unique part search application.

TimeSheet

- Track engineering time to properly calculate actual cost.

QBuild Solution Products

Conclusion

ERP systems do not longer need to be limited when it comes to customizing it, with the help of QBuild, linking CAD systems to SyteLine seem to be quite easy. QBuild took the time to understand the way BTI did their processes and was able to deliver a solution that maximized their time as well as money savings.

All products delivered by QBuild are customized to reflect the customers' current process.

"BTI was able to see a rise in their productivity which also coincide with a noticeable decreased in design and production costs."