

# QBuild Software Solution Products

## CADLink

CAD Interface system that connects your design information to VISUAL.

## ECN Manager

Ties your VISUAL CAD information with your Engineering change process.

## PartSurfer

Simple, read-only part search application.

## Time Sheet

Track engineering time to properly calculate actual cost.

**QBuild**  
CORPORATION

### QBuild Software

145 Renfrew Drive  
Unit 140  
Markham, Ontario  
L3R 9R6  
Canada

Phone: 905-479-7811  
Fax: 905-479-2636  
E-mail: [info@qbuildsoftware.com](mailto:info@qbuildsoftware.com)

[WWW.QBUILDSOFTWARE.COM](http://WWW.QBUILDSOFTWARE.COM)

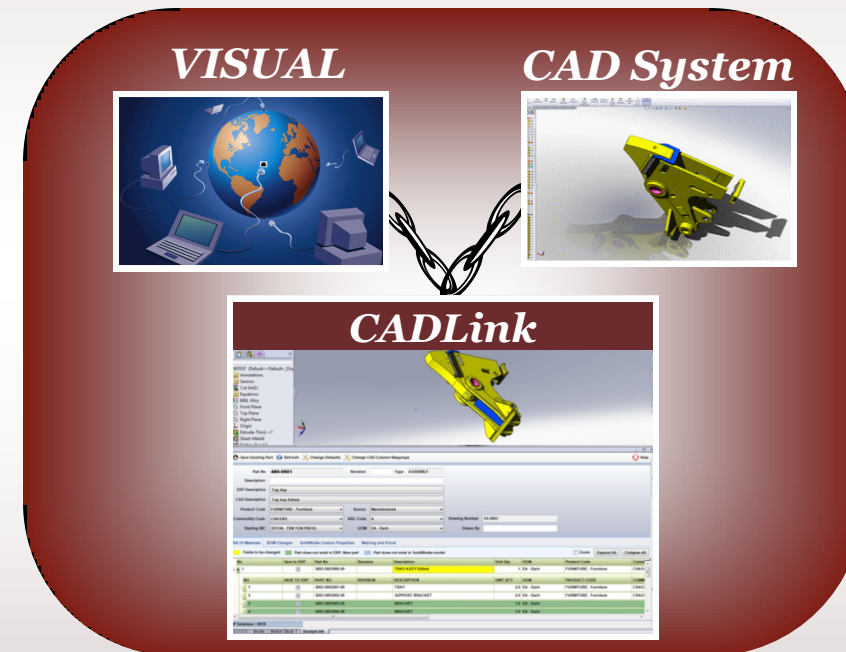


QBuild  
Software

# CADLink

*Integrate and  
Synchronize CAD  
Data with VISUAL*

**CADLink** Interface system is a turnkey system designed to tightly connect your design information to VISUAL. It allows engineering designers to view, modify, update and create VISUAL engineering information such as bill of materials and item master data without ever leaving the design suite of their choice – AutoCAD, CATIA, Inventor, Pro-E, SolidEdge and SolidWorks.



*CADLink saves significant engineering resources: typical payback period is six months and less. The real-time, two-way link between engineering design and VISUAL also allows Engineering to benefit from item description standardization already in VISUAL database. Production benefits from having drawing information identical to work order documentation eliminating ambiguity and reducing rework and scrap.*

***“Data is taken directly from the drawing or model and integrated it with VISUAL.*”**

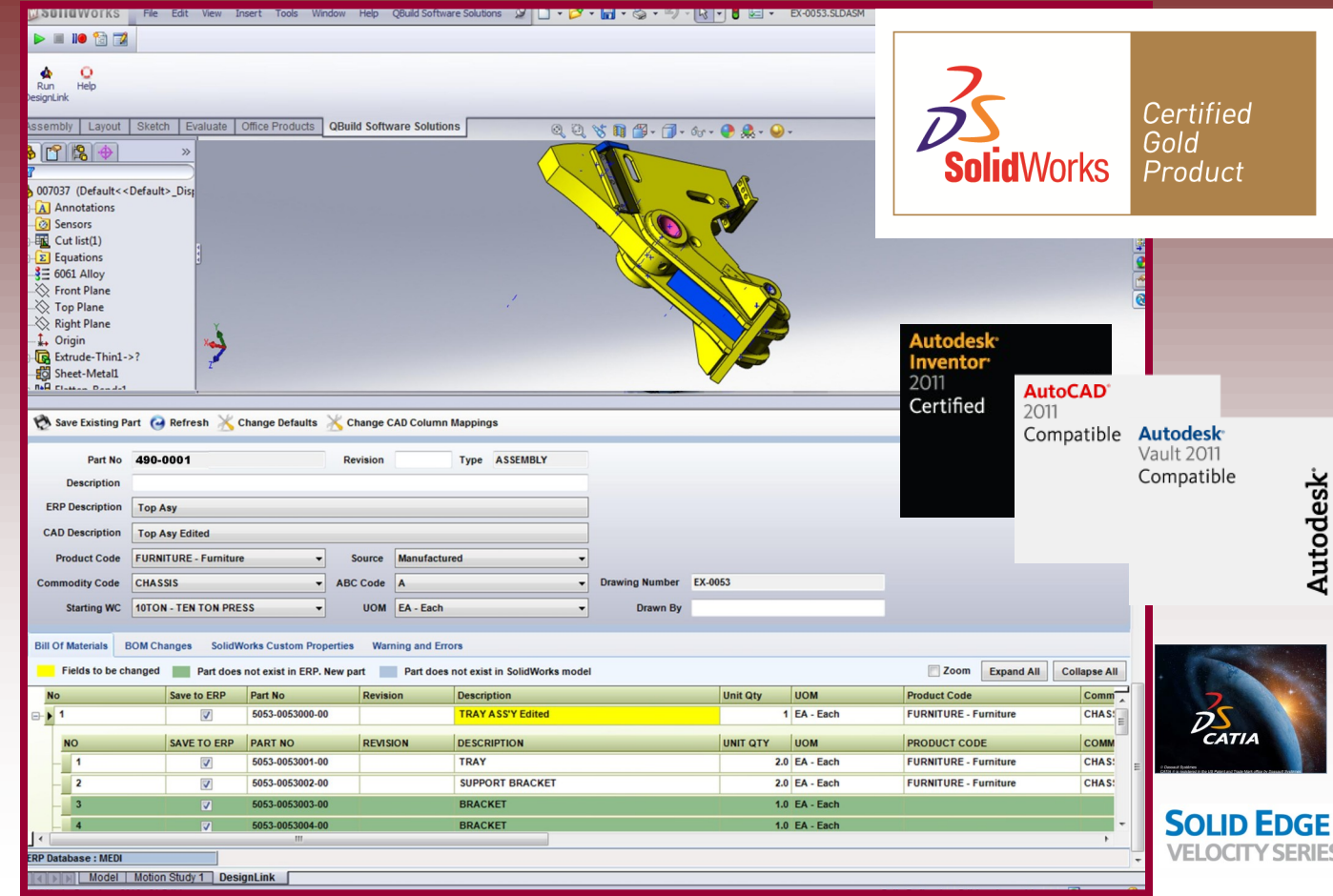
Free Demo



[info@QBuildsoftware.com](mailto:info@QBuildsoftware.com)

## Product Features

- ∂ Real time two way link between CAD and VISUAL Data.
- ∂ Eliminate double and triple data entry.
- ∂ Allow your engineering staff to enter VISUAL data directly from their engineering design application.
- ∂ Works with AutoCAD, CATIA, Inventor, Pro-E, SolidEdge and SolidWorks .
- ∂ Interface for Bill of Materials, Where Used, Part Master and Manufacturing Routings.
- ∂ Engineering Change Order System can be bolted on.
- ∂ Automatic update of change information in Notes or PartsInfo databases.
- ∂ Can integrate with Vault / ePDM / PLM



## Direct Cost Saving Benefits

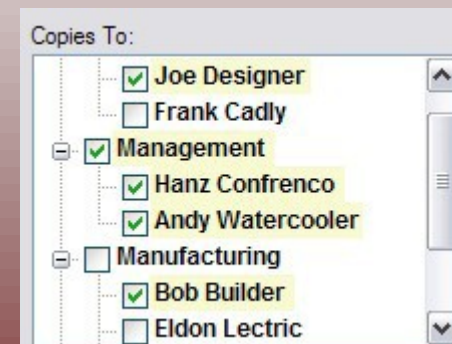
**Eliminate Engineering Clerical Work**—With the CADLink CAD Interface, your engineering team can focus on what they do best. Double and triple data entries are eliminated and engineering information is input into your CAD package and your ERP system in one simplified interface. This frees up engineering staff to do more engineering, reducing your engineering costs.



**Reduce Data Entry Errors**—By unifying the data entry process, the CADLink Interface eliminates sources of error in your ERP system data. This is a potentially huge cost savings as a single mistake in the Bill of Materials will eventually lead to ordering errors that result in either scrap, excess inventory or late shipment of parts.

## ECN Manager

CADLink creates the building blocks that will allow you to automate and integrate your entire revision and Engineering Change Order Process. The ECN Manager module bolts onto CADLink providing engineers with critical change information such as inventory, open work order and sales orders as engineering changes are made. This allows your engineering team to make informed decisions regarding stock disposition and inventory rework requirements.



The ECN Manager distribution system ensure the right people are notified and customer orders are properly handled.

**Contact us to set up a Free Demo Today!!**